

**VINNOX1**  
Simplify Your Work With A Touch



**VINNO Technology (Suzhou) Co., Ltd.**

5F, A Building, No.27 Xinfu Rd, Suzhou Industrial Park, 215123, China

Tel: +86 512 62873806

Fax: +86 512 62873801

Email: [vinno@vinno.com](mailto:vinno@vinno.com)

Website: [www.vinno.com](http://www.vinno.com)

VINNO reserves the rights to revise the technical specifications if needed.

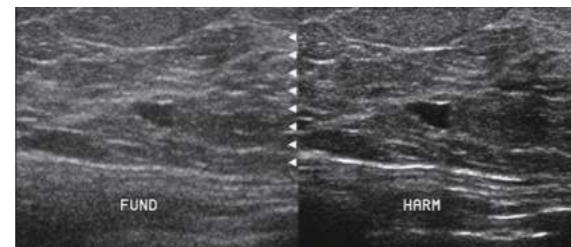


## Outstanding Imaging Performance

With competitive price, X1 is consistent to deliver outstanding image quality with advanced imaging technology such as Pulse Inversion Harmonic, VFusion, Vspeckle.

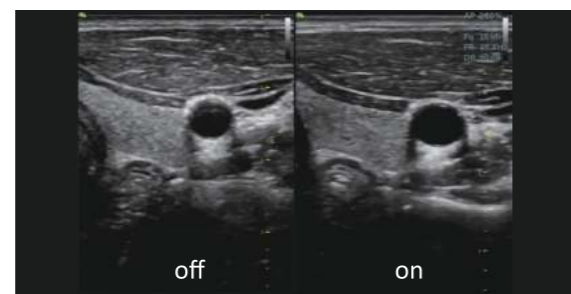
### Pulse Inversion Harmonic

In nonlinear imaging, Pulse Inversion Harmonic provides improved image quality and enhanced diagnostic capabilities by reducing potential interference from fundamental signal.



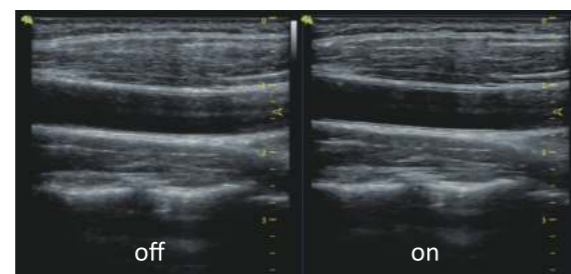
### VFusion

VFusion helps to improve the image information through transmitting signal from different angles which enhance contrast resolution and reduce the noises.



### Vspeckle

Vspeckle can automatically enhances contrast and reduces speckle, haze and other artifacts based on different application requirement.



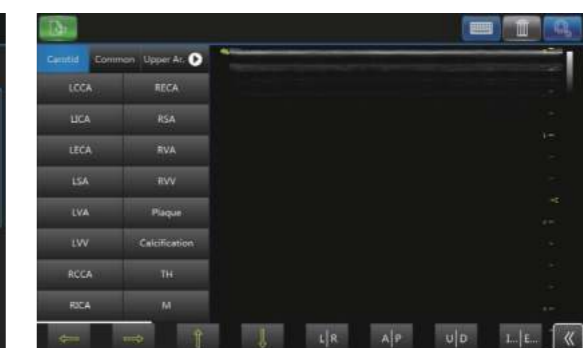
## Efficient Workflow

Simple user interface and touch panel operation make you work efficiently everyday

### Quick Preset



### Self-defined Workflow



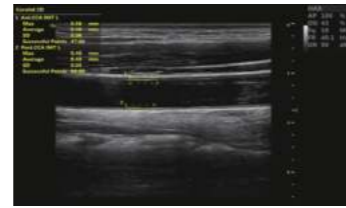
### Fast Connectivity



## Versatile Application Tools

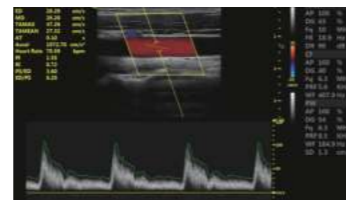
### Auto IMT

Automatically measure Intima-Media Thickness in interest area and provides the measurement result in easy, fast and accurate approach



### Auto Trace

Auto spectrum envelope trace, whatever live or frozen status and display the measurement items automatically



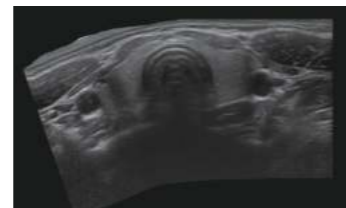
### 2D Auto Follicle

Just one click, the system will detect the ovaries in the image and calculate the key measurement items of the ovaries automatically.



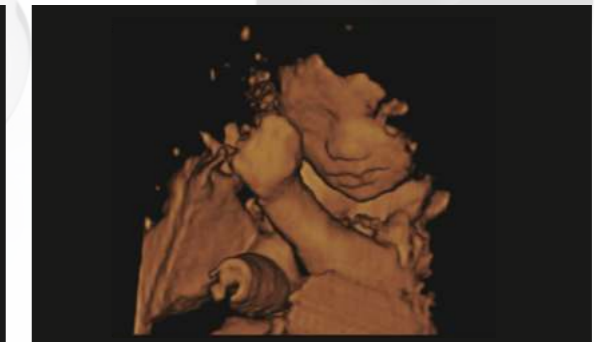
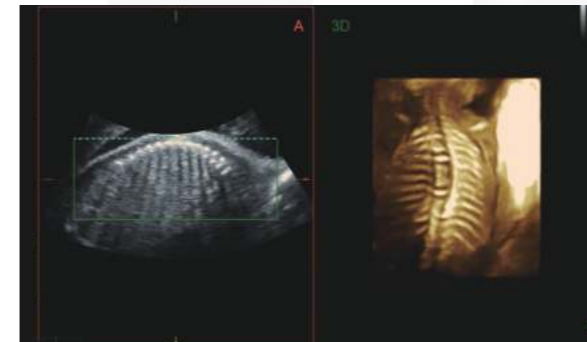
### Pview (Real Time)

Pview allows extended view of the relationship of anatomical structures



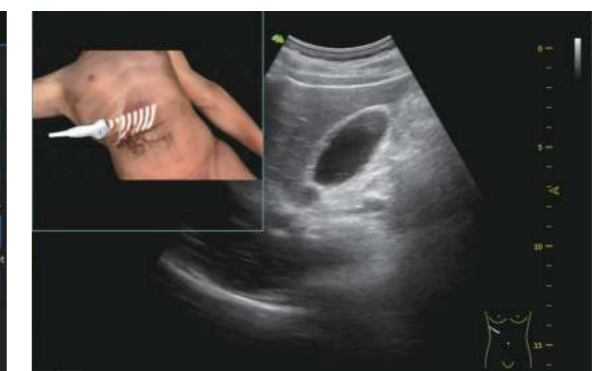
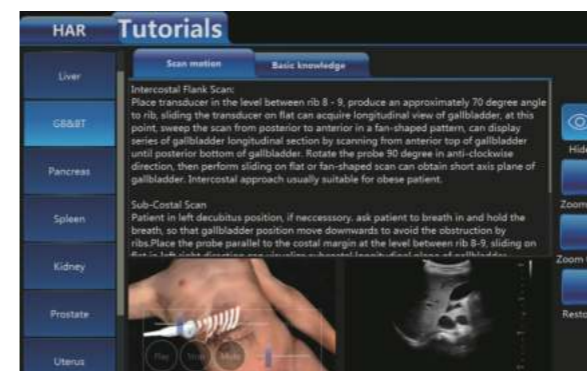
### 4D Imaging

VINNO X1 offers high quality 3D/4D images with M-Cut function, Different view of fetal structures from different slices can enhance your diagnostic confidence.



### Tutorial

Practitioners can learn basic scanning knowledge, standard planes and anatomical information through VINNO's Tutorial.



# Exquisite Design

21.5 inch high resolution LED display and 180 degree rotational arm ensures you view comfortably



8 inch touch panel release you from repetitive button operation



compact transducer connector for easy access



high quality chips supplied from famous company TI, Altera

