



### Global Medical Engineering (BD) Ltd.

**Corporate Office:**17/2, Topkhana Road (2nd Floor), Dhaka - 1000, Bangladesh.  
**Phone:** +88 09678020555 **Fax:** +88 02 9576881 **Cell:** +8801404003500  
**E-mail:** info@gmebd.com ; gmebd@hotmail.com **Website:** www.gmebd.com

### VINNO Technology (Suzhou) Co., Ltd.

5F, A Building, No.27 Xinfu Rd, Suzhou Industrial Park, 215123, China  
Tel: +86 512 62873806  
Fax: +86 512 62873801  
Email: vinno@vinno.com  
Website: www.vinno.com

VINNO reserve the rights to revise the technical specification if needed

**VINNO E10**  
Slim, Compact, Powerful



**VINNO**  
vision in innovation



## VINNOE10

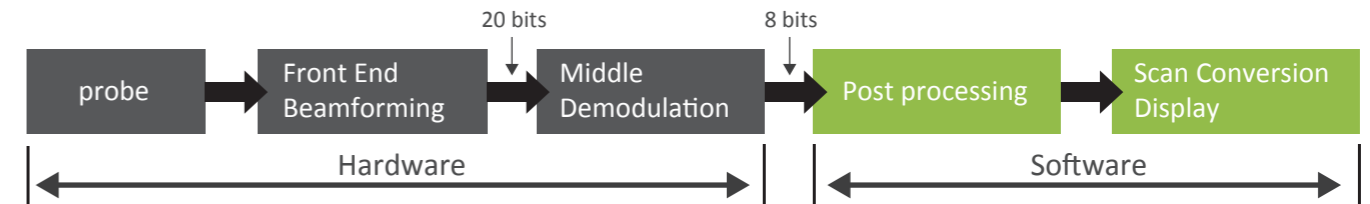
E10 offers value added performance, flexible configuration and compact design to meet with varied clinical requirements. Its simplicity and mobility make you good alignment with narrow space.

- » Core Technology
- » Compact Concept
- » Powerful Function

## Core Technology

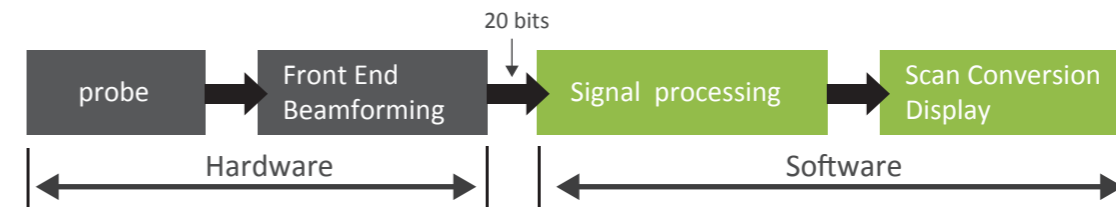
E10 transplants VINNO core technology RF platform into a slim and compact design concept. Due to the outstanding signal process technology, it delivers clear image quality. Slim body, light weight and small footprint make it ideal for small space and more mobility.

### Traditional Ultrasound Platform — Image data processing platform



### Innovative RF Ultrasound Platform

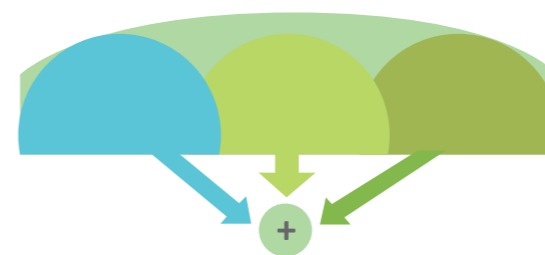
#### RF signal data processing platform for better resolution and definition



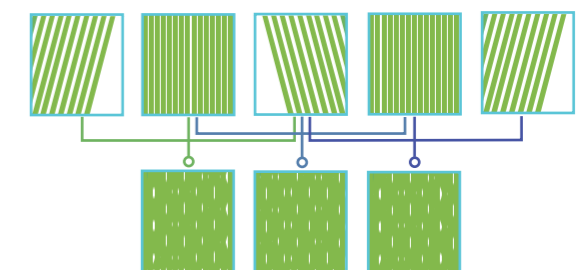
- √ Bigger data to compute for better image quality.
- √ Non-linear demodulation to strong signal.
- √ More accurate and higher step calculation.

- √ Processing algorithm based on signal data, not image data.
- √ Flexible algorithm on data processing.

### Frequency Compound Imaging



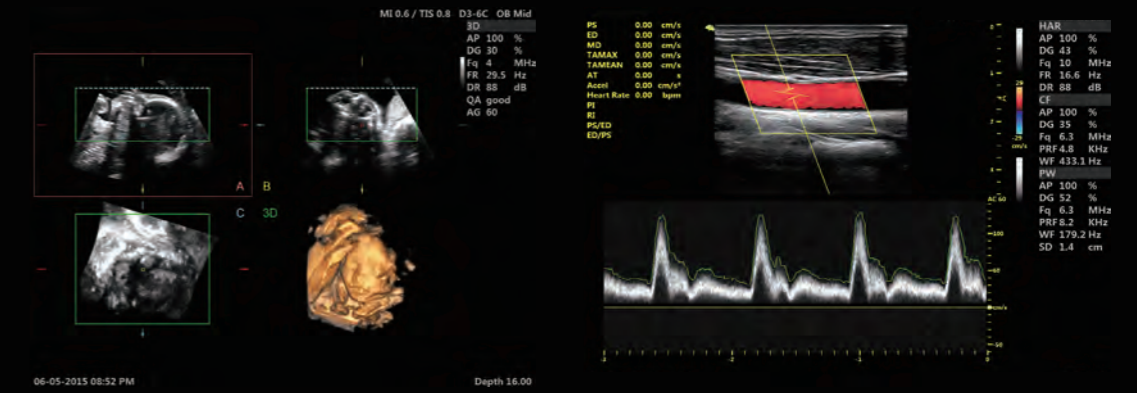
### Spatial Compound Imaging



## Powerful Function

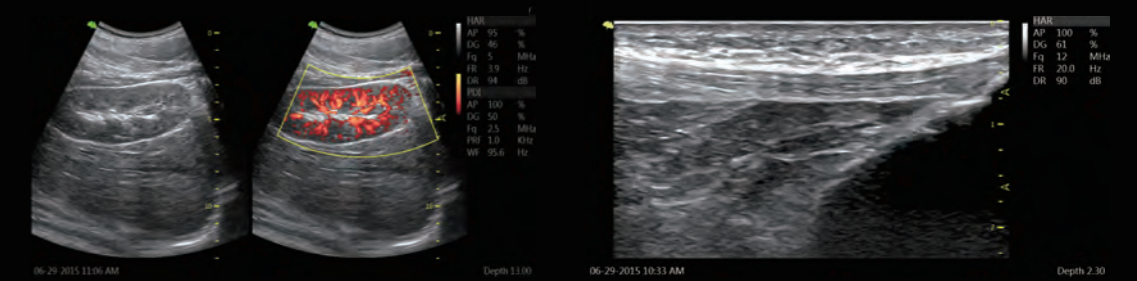
E10 offers you a lot of convenient and fast operation and measurement tools which make your daily work efficient and comfortable. VINNO focuses on your requirement and always brings you more useful solution.

- » Triplex
- » Auto Optimization
- » Easy Compare
- » Full Screen
- » Pview
- » Needle Enhancement
- » Smart 3D/4D Function
- » Auto Measurement  
(Auto IMT/ Auto NT/ Auto PW/ CW trace)



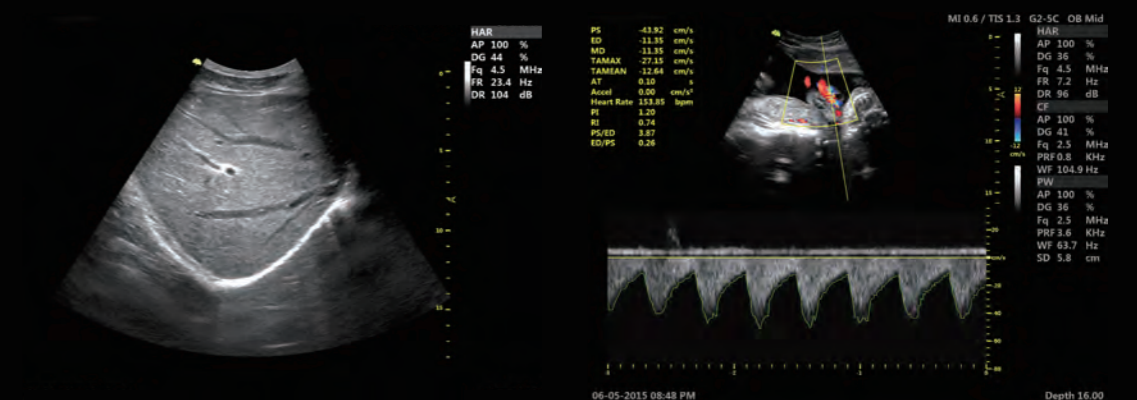
24 weeks fetal face-4D mode

carotid-PW mode, Auto trace



kidney-dual synchronize mode

patella tendon-B mode



liver-B mode

umbilical cord-PW mode



Fast Connectivity  
Bluetooth/ Wireless Network/ DICOM3.0



Image post process, synchronization with your mobile phone



Patient/Exam					
Patient ID	Name	BirthDay	Gender	Last Date	Image Size
20150504000				05-04-2015	10.68MB
20150428000	demo-G50			05-04-2015	977.31MB
20150421000	4D			05-04-2015	603.07MB
	malan			04-16-2015	170.97MB
	liangjie			04-16-2015	197.52MB
	baoyimin			04-16-2015	370.89MB
Scan Date	Application	Image Size			
01-26-2015		98.22MB			
01-27-2015		173.34MB			
05-04-2015		52.91MB			

### Slim, Compact Design

- » 19 inch professional LED monitor gives you more clear view.
- » 10 inch smart touch panel enables the operation more convenience.
- » Pinless and flat probe connection make you more comfortable.
- » 500G HDD ( big enough for volume data storage ).
- » B/W video printer slot.

