

## Technical Specifications:

### General Information:

Machine type: Random access, open reagent & locked reagent  
 Test speed: Constant 200 tests/hour (mono reagent or double reagent)  
 Test principle: Colorimetric method, turbidimetry  
 Test method: 1 point end, 2 point end, Fixed-Time, Kinetics  
 Calibration type: Linear & nonlinear

### Sample & Reagent unit:

Sample tray: 40 sample positions  
 Sample cup type: Micro cup & test tube  
 Reagent tray: 80 reagent positions(40 for RI & 40 for R2)  
 Sample volume: 2-30ul, step by 0.1u  
 Reagent volume: 20-300ul, step by 1ul  
 Sample & Reagent bar code reader(optional)

### working conditons:

Power supply: AC 110/220V  $\pm 10\%$ , 50/60 Hz, 1000VA  
 Water consumption: 8L/hour(maximum)  
 Dimension: 650mm\*700mm\* 1200mm(L\*W\*H)

### Optical system:

Light source: Halogen lamp  
 Wavelength: 340nm; 405nm; 450nm; 505nm; 546nm; 578nm;  
 630nm; 700nm(4 more options)  
 Absorbance range: 0-4.0 Abs  
 Resolution: 0.0001Abs

### Reaction unit:

Reaction tray: 44 high quality plastic cuvettes  
 Reaction volume: 150ul-350ul  
 Reaction time:  $\leq 15$  minutes  
 Temperature: Peltier pad incubation system,  
 reaction temperature ( $37^{\circ}\text{C} \pm 0.1^{\circ}\text{C}$ )  
 Cuvette washing: 3\*4 steps automatic washing

### Operation system requirements:

Operation system: Windows XP, Windows 7, Windows 8  
 Nterface: USB

### Mixing system:

Teflon coating mixer



INNOVATION DESIGN  
 SMART COMBINATION

200 tests per hour-Time Efficiency  
 Automated testing & Low Maintenance-  
 Operation Efficiency

150ul reagent  
 consumption-Cost Efficiency

**GA-400**  
**Auto-Chemistry Analyzer**

Excellent Pirce/performance ration



### Gariner Diagnostic

GmbH Unter Gereuth 100D-79453 Bahlingen Germany

Gariner Diagnostic reserve all the right to make any modifications without prior notification.

Tel: +49 7663 90390  
 Fax: +49 7663 9139 150



### Authorized Local Dealer:

Global Medical Engineering (BD) Ltd.

17/2, Topkhana Road (2nd floor) Dhaka -1000 Bangladesh

Phone: +88 02 9564225 Fax: +88 02 9576881 Cell: +88 01711 020555

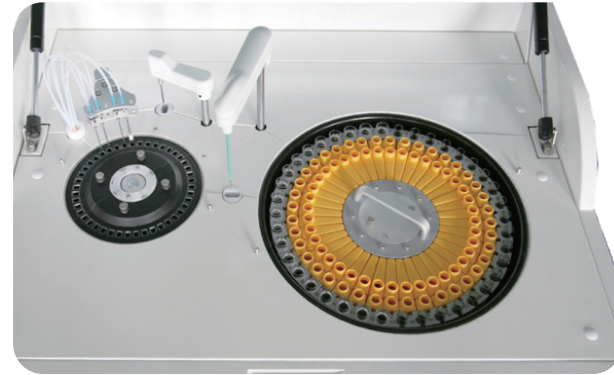
E-mail: info@gmebd.com, gmebd@hotmail.com, Web: www.gmebd.com





## ● Sampling probe

External & internal mirror polish,  
external & internal probe  
washing(reducing carry-over)  
Dedicated sampling probe equipped  
with sensitive liquid sensor, timely  
feedback of reagent & sample residuals  
Collision protection  
Automatic probe depth adjusting

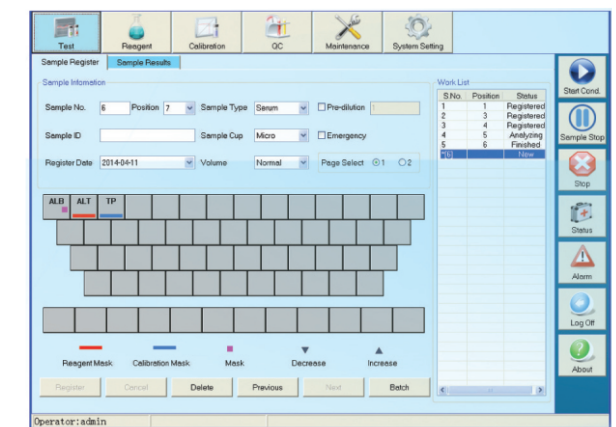
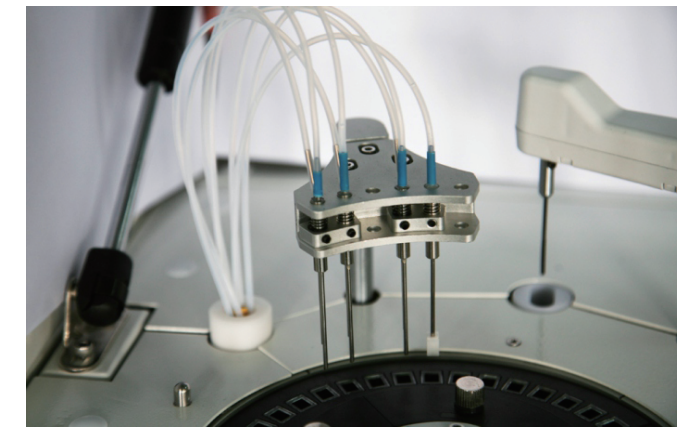


## ● Excellent mixer design

Teflon coating mixer. No water  
dropping (reducing carry-over)  
Excellent mixing effect with  
standard mixing procedure

## ● Washing station

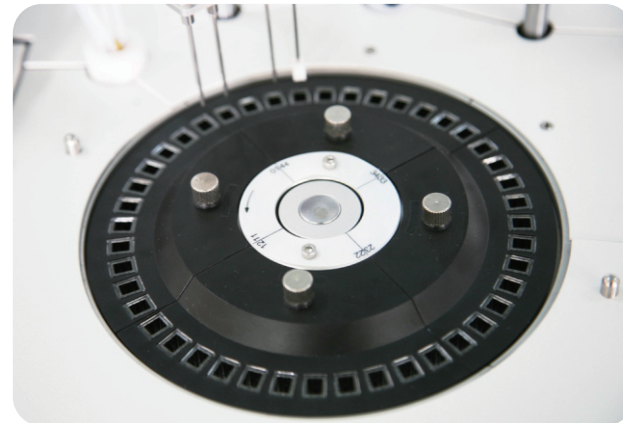
4 needles wash-station  
Triple washing  
Effective washing to ensure accurate  
result and valid diagnostics



## ● Powerful Software

User friendly software interface simple, easy-to-operation  
Sample automatic dilution(decrease, increase, normal)  
Masking tests when reagent or standard is exhausted

# Caring for life.



## ● Reaction tray

44 reaction cuvettes  
Reaction volume as low as 150ul  
Stable & accurate temperature  
(37±0.1 °C) for reaction

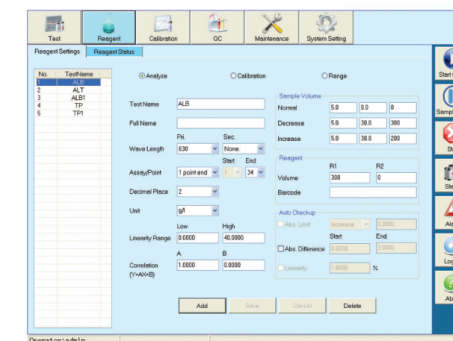


## ● High precision ceramic syringe

Sample dispensing by frequency converting design  
Permanent ceramic piston  
Accurate dispensing as low as 0.1ul

## ● Multi-functional Sample& Reagent Tray

80 reagent positions (40 for RI, 40 for R2)  
40 sample positions, micro cup & test tube can be used  
Non-stop cooling system with peltier pad inside,  
24 hours 20°C-140°C  
Bar code reader(optional)



- Calibrator auto-dilution  
Linear & nonlinear calibration  
Multi-points calibration up to 8 points  
Quality control apply to Westgard, L-T plot, Cumulative

- Real-time display of running status  
Real-time display of status of reagent tray, sample tray  
and reaction tray  
Real-time updating of reagent residuals  
Real-time marking of defective cuvette  
Reaction result automatic checking and warning  
Calibration result automatic checking and warning  
Alarm log: Automatic alarm and record in alarm list with  
explanations during running process

