

Technical Specifications:

General Information:

Machine type: Random access, open reagent & locked reagent
 Test speed: Constant 200 tests/hour (mono reagent or double reagent)
 Test principle: Colorimetric method, turbidimetry
 Test method: 1 point end, 2 point end, Fixed-Time, Kinetics
 Calibration type: Linear & nonlinear

Sample & Reagent unit:

Sample tray: 40 sample positions
 Sample cup type: Micro cup & test tube
 Reagent tray: 80 reagent positions(40 for RI & 40 for R2)
 Sample volume: 2-30ul, step by 0.1u
 Reagent volume: 20-300ul, step by 1ul
 Sample & Reagent bar code reader(optional)

working conditons:

Power supply: AC 110/220V ±10%, 50/60 Hz, 1000VA
 Water consumption: 8L/hour(maximum)
 Dimension: 650mm*700mm* 1200mm(L*W*H)

Optical system:

Light source: Halogen lamp
 Wavelength: 340nm; 405nm; 450nm; 505nm; 546nm; 578nm;
 630nm; 700nm(4 more options)
 Absorbance range: 0-4.0 Abs
 Resolution: 0.0001Abs

Reaction unit:

Reaction tray: 44 high quality plastic cuvettes
 Reaction volume: 150ul-350ul
 Reaction time: ≤15 minutes
 Temperature: Peltier pad incubation system,
 reaction temperature (37°C±0.1 °C)
 Cuvette washing: 3*4 steps automatic washing

Operation system requirements:

Operation system: Windows XP, Windows 7, Windows8
 Nterface: USB

Mixing system:

Teflon coating mixer



INNOVATION DESIGN
 SMART COMBINATION

200 tests per hour-Time Efficiency
 Automated testing & Low Maintenance-
 Operation Efficiency

150ul reagent
 consumption-Cost Efficiency

GA-400
Auto-Chemistry Analyzer

Excellent Pirce/performance ration



Gariner Diagnostic

GmbH Unter Gereuth 100D-79453 Bahlingen Germany

Gariner Diagnostic reserve all the right to make any modifications without prior notification.

Tel:+49 7663 90390
 Fax:+49 7663 9139 150



Global Medical Engineering (BD) Ltd.

Corporate Office:17/2, Topkhana Road (2nd Floor), Dhaka - 1000, Bangladesh.
 Phone: +88 09678020555 Fax: +88 02 9576881 Cell: +8801404003500
 E-mail: info@gmebd.com ; gmebd@hotmail.com Website: www.gmebd.com



● Sampling probe

External & internal mirror polish,
external & internal probe
washing(reducing carry-over)
Dedicated sampling probe equipped
with sensitive liquid sensor, timely
feedback of reagent & sample residuals
Collision protection
Automatic probe depth adjusting

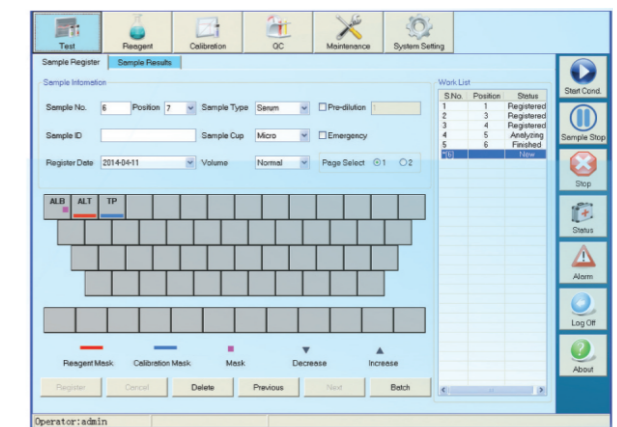
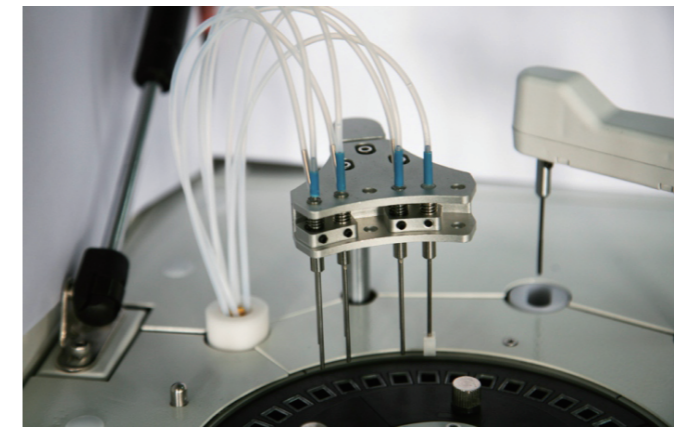


● Excellent mixer design

Teflon coating mixer. No water
dropping (reducing carry-over)
Excellent mixing effect with
standard mixing procedure

● Washing station

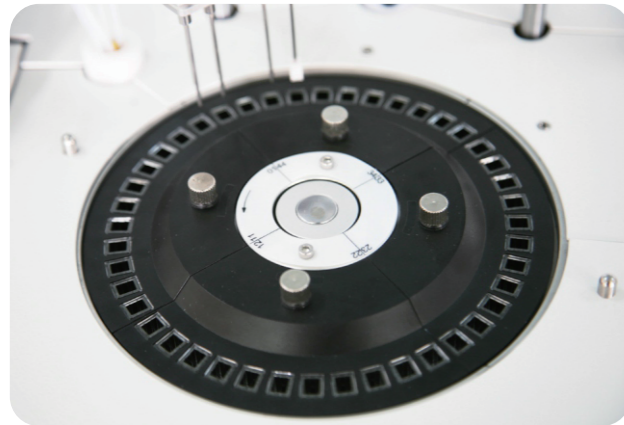
4 needles wash-station
Triple washing
Effective washing to ensure accurate
result and valid diagnostics



● Powerful Software

User friendly software interface simple, easy-to-operation
Sample automatic dilution(decrease, increase, normal)
Masking tests when reagent or standard is exhausted

Caring for life.



● Reaction tray

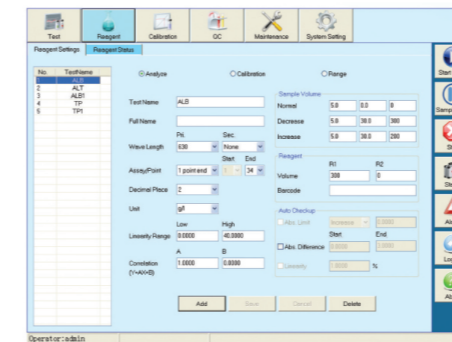
44 reaction cuvettes
Reaction volume as low as 150ul
Stable & accurate temperature
(37±0.1 °C) for reaction

● High precision ceramic syringe

Sample dispensing by frequency converting design
Permanent ceramic piston
Accurate dispensing as low as 0.1ul

● Multi-functional Sample& Reagent Tray

80 reagent positions (40 for RI, 40 for R2)
40 sample positions, micro cup & test tube can be used
Non-stop cooling system with peltier pad inside,
24 hours 20°C-140°C
Bar code reader(optional)



- Calibrator auto-dilution
Linear & nonlinear calibration
Multi-points calibration up to 8 points
Quality control apply to Westgard, L-T plot, Cumulative



- Real-time display of running status
Real-time display of status of reagent tray, sample tray and reaction tray
Real-time updating of reagent residuals
Real-time marking of defective cuvette
Reaction result automatic checking and warning
Calibration result automatic checking and warning
Alarm log: Automatic alarm and record in alarm list with explanations during running process

