



▶ Test Menu

▶ Thyroid

- TSH
- T3
- T4
- FT3
- FT4
- Anti-Tg*
- Anti-TPO*

▶ Allergy

- IGE*

▶ Infectious Disease ▶ Brain Injury ▶ Anemia

- TB-IGRA
- HBs-Ag
- Anti-HCV
- HIV
- TP*

▶ COVID-19

- S100
- Aβ1-42*
- AD7C-NTP*
- IgG*
- IgM*
- Ag*
- nAb*

▶ Bone Metabolism

- VB12
- Folate
- Ferritin
- 25-OH-VD
- PTH*
- Calcitonin*
- N-MID Osteocalcin*

▶ Fertility

- β-HCG
- FSH
- LH
- PROL
- Progesterone
- Testosterone
- E2
- AMH
- E3*
- INH-B*

▶ Tumor Markers

- CEA
- AFP
- tPSA
- fPSA
- CA125
- PG I
- PG II
- Gastrin-17
- CA19-9*
- CA15-3*

▶ Inflammation

- PCT
- CRP
- SAA
- IL-6
- HBP

▶ Cardiac Markers

- cTnI
- Hs-cTnI
- cTnT
- Myo
- CK-MB
- NT-ProBNP
- D-Dimer
- H-FABP
- BNP
- Lp-PLA2*
- ST2*
- MPO*
- Hcy*
- GDF-15*

▶ Diabetes

- Insulin*
- C-Peptide*

* Upcoming

Global Medical Engineering (BD) Ltd.

Corporate Office: 17/2, Topkhana Road (2nd Floor), Dhaka - 1000, Bangladesh.
 Phone: +88 09678020555 Fax: +88 02 9576881 Cell: +8801404003500
 E-mail: info@gmebd.com ; gmebd@hotmail.com Website: www.gmebd.com



All rights reserved. Features and specifications are subject to change without prior notice.



CLIA-mate

Chemiluminescence Immunoassay Analyzer

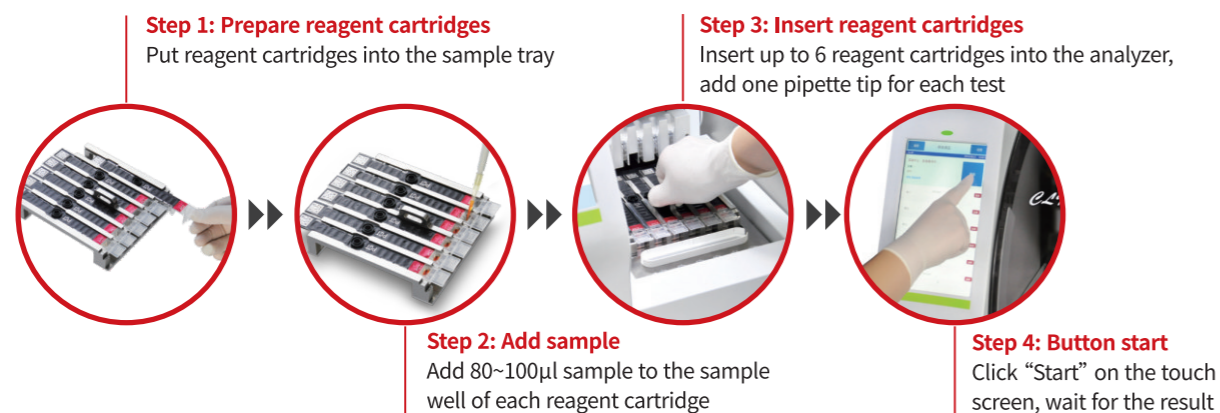
Aikang MedTech Co., Ltd

CLIA-mate is a magnetic particle-based chemiluminescence immunoassay system with ALP-AMPPD principle. It combines the accuracy of CLIA technology with the flexibility and simplicity of single-test. All-in-one design of reagent cartridge and comprehensive test panels make CLIA-mate an ideal system for clinical departments, clinics, laboratories and even a supplement in central labs. Test panels include: Thyroid, Fertility, Anemia, Inflammation, Cardiac Markers, Tumor Marker, TORCH, Diabetes, Brain Injury, Bone Metabolism, Infectious Disease, Autoimmunity, Allergy, COVID-19, etc.

► Specifications

Principle	ALP-AMPPD chemiluminescence immunoassay
Sample type	Whole blood/Serum/Plasma
Throughput	30 t/hour
Test mode	Batch mode
Display	10.1-inch touch screen
Calibration frequency	100 days
Consumable	Disposable tips
Data storage	≥100,000
Communication port	USB/RS232/LAN/WIFI, available for LIS
Printer	Built-in thermal printer
Dimensions	671×394×534 mm
Weight	44 kg

► Easy Operation

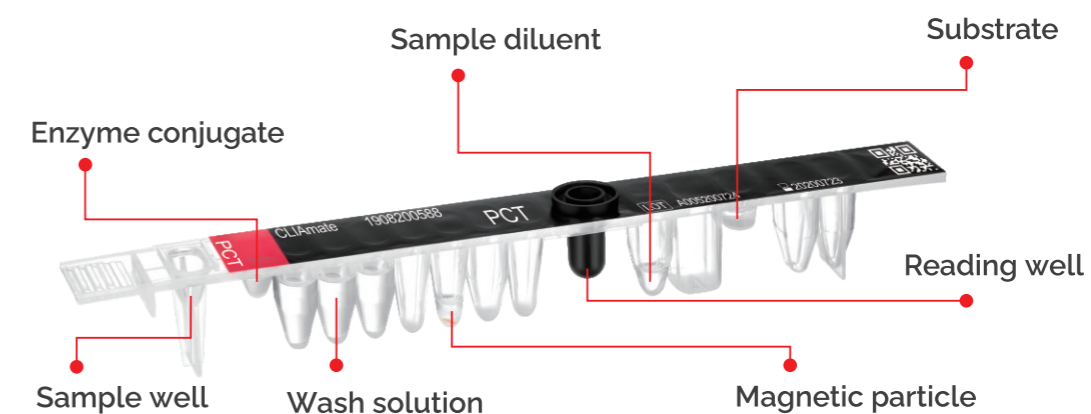


► Features

- Real CLIA technology with high sensitivity&accuracy
- Instrument with compact design at affordable cost
- Single test reagent cartridge without any reagent waste
- Specifications: 30 test/kit, 60 test/kit
- Disposable tip for each assay, reduce cross contamination
- Reagent information loading by external barcode scanner automatically
- 2 points calibration only, less calibration cost
- Android operation system, easy upgrading through USB port
- Easy operation and free maintenance
- Whole blood for cardiac and inflammation parameters, results within 17 minutes



► All-in-one Reagent Cartridge



► Principle

